

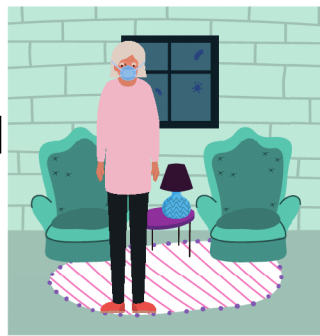
Employers & Employees

What to expect when notified that a person has been diagnosed with COVID-19 or has been exposed to a person diagnosed with COVID-19.



Employee tests positive for COVID-19:

Employee should self-isolate.



A public health staff will contact them to identify close contacts and discuss next steps



The public health staff will then notify close contacts of their potential exposure, keeping employee confidential.



Employees can return to work when criteria in Return to Work guidance has been met

Employee was a close contact:



They will be contacted by a public health staff to discuss next steps



Employee will be asked to self-quarantine for 14 days and self-monitor for symptoms